

*June.*

OPAL VILLAS

# BELONG

At SODIC we celebrate differences. We champion inclusion, advocate tolerance and spread love. We do not see anything but the greener side, to both sides of the fence. Our developments are more than just bricks and mortar and landscapes, they are borders of trust and acceptance and understanding.

It doesn't matter what you are into or what you believe, we celebrate all the differences that make you unique. At SODIC you don't live, work or play. You belong.





# IT MUST BE *june.*

Go where splashes of South Beach are seen all over the Miami-inspired locale. From artistic designs to glamorous environments, you will be in a simpler time, made for the modern mindset. When you're feeling carefree, on top of the world and wholly at ease with yourself, you know, it must be June.

# THE TOWN

A vision of a town precisely designed to meet your preferences, aspirations and tastes that make your summer home an exclusive seaside retreat. Each neighborhood brings its own unique sense to the summer feel with lush landscapes and amenities close to your home while enjoying uninterrupted views for the sea.



# IT'S WHERE IT'S HAPPENING NEXT .....

located in the new and happening side of sahel at KM90 on the Matrouh-Alex Road, portrays more than 280 acres of scenic coastline. June, is 8 smooth kilometers away from Caesar.

With the recently opened Dabaa Road, commuting from Cairo has never felt more like a summer breeze.

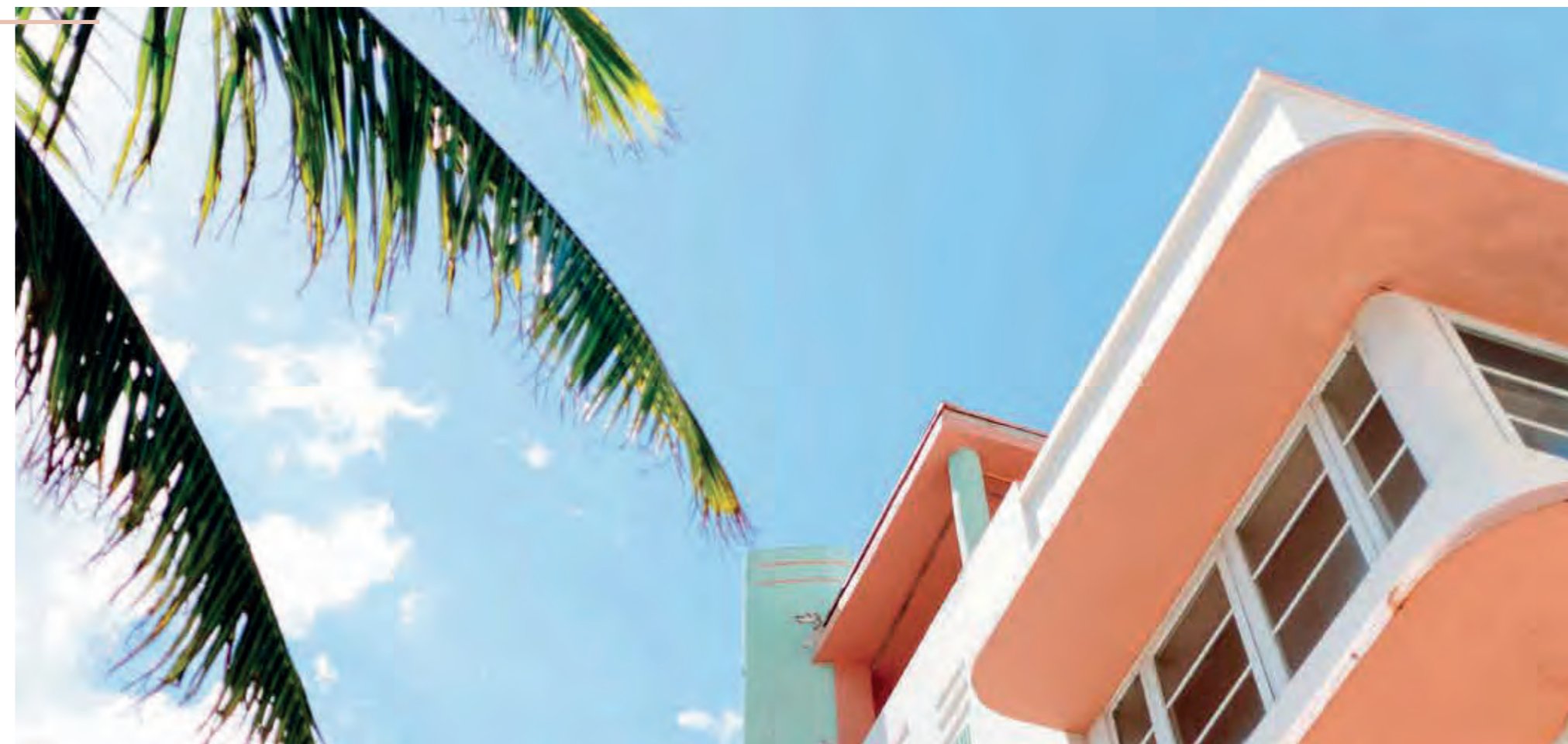


# AN ARCHITECTURAL REVIVAL



## ART DECO DESIGNED HOMES

Borrowing from vibrant, swirling styles of Miami's famed South Beach, June features an iconic design with its spherical appearance and curvy corners. Embodying art-deco, revel in the neon lighting, porthole windows, and glass blocks in this, Modern-Mediterranean take on Miami.



# LIVE ELEVATED

**UP TO 50 METERS ABOVE SEA LEVEL**

Discover a scenic, calm and collected sensation from a magnificent elevation, with unobstructed views of gorgeous, panoramic horizons and endless sea water.



---

# A TRUE BEACH TOWN EXPERIENCE



June has everything you could ever wish for in a beach town. Take a stroll on the boardwalk, that has a life of its own, where a world of summer sights, tastes, scents and sensations await, day and night!

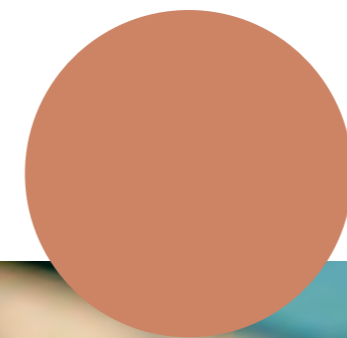
June is designed with an eco-friendly vision that entails having a self-sufficient community, from the local transportation buses that can drop you off at your desired destination, to desalination plants that are partially powered by solar energy all making staying at June a smart decision, at a smart coastal town.

---

# THE BOARDWALK

welcome to a new beach-front experience. The Boardwalk is a new mixed-used concept for young, diverse outlets in a thriving, unique, setting overlooking the charming beach-front promising a good time for all.

Find all you could possibly imagine with a unique retail experience, a variety of leisure and entertainment activities all nestled at the beach front ensuring that your every day stroll is different.



# ROOM FOR YOU

## HOTEL

More than 200 rooms

At June you will find a hotel that takes you on an exclusive hospitality journey. Once you arrive the rest, is always up to you, enjoy a pampered stay all with breathtaking views of the turquoise sea.



# BEACHFRONT F&B AND RETAIL EXPERIENCES

Find all you could possibly imagine with a unique retail experience. Enjoy the summer breeze and gentle waves crashing to shore as you shop for everything from groceries to haute couture.



## RESTAURANTS & CAFES

June serves up an array of quality ingredients and flavors from cuisines around the world. A stroll through the boardwalk leaves you with endless choices. From a light bite to a real-deal, sit-down meal, treat yourself to the freshest ingredients to the sweetest recipe, for an unforgettable time.



# YOUR PATH TO THE SEA

**ALL WALKWAYS LEAD TO THE SEA**  
MINTUES 7

June is a natural environment interconnected for your convenience. Pedestrian only tracks dedicated to walking, jogging, rollerblading, skateboarding, scooters and bicycles abound in this refreshing climate, all leading to the beach.



# THE NATURE OF IT ALL

With the rows of palm trees that greet you. Carefully selected plant-life that enhance the existing nature of the area, that embrace your way. lush landscape, generous green spaces all manicured to ensure verdant views.



# SCENIC BLUESS



●●●●●●●●

## **MORE THAN 100,000 SQM OF LAGOONS**

The lagoons around June not only add beauty to the place, but are also easily accessible from all points of this beach town and in some exclusive areas, may be right in front of your seaside home.

# THE CLUBHOUSE

Escape to the club life, where you'll find a host of recreational activities and poolside service. Work a sweat at the gym, pick up some new gear, have a bite or lounge.



# A NEW COASTAL SPORTS EXPERIENCE



Club S is destined to be the state of the art sports facility at June with a wide range of sports academies, wellness and leisure activities.

The club is designed to cater for future sports at world class standards.



# CLOSE CONVENIENCES

In June, you will have the convenience of finding a pharmacy, clinic, supermarket, outdoor gym, mosque, a park with countless adventures for your kids, all nearby.



# UNIT TYPES

# SEASIDE VILLA



- Full Seaview From Ground Floor
- Elevated Seafront Villa
- Widest Frontage
- 2 Bedrooms Overlooking The Sea
- En Suite Bedrooms



# SEASIDE VILLA

Ground Floor

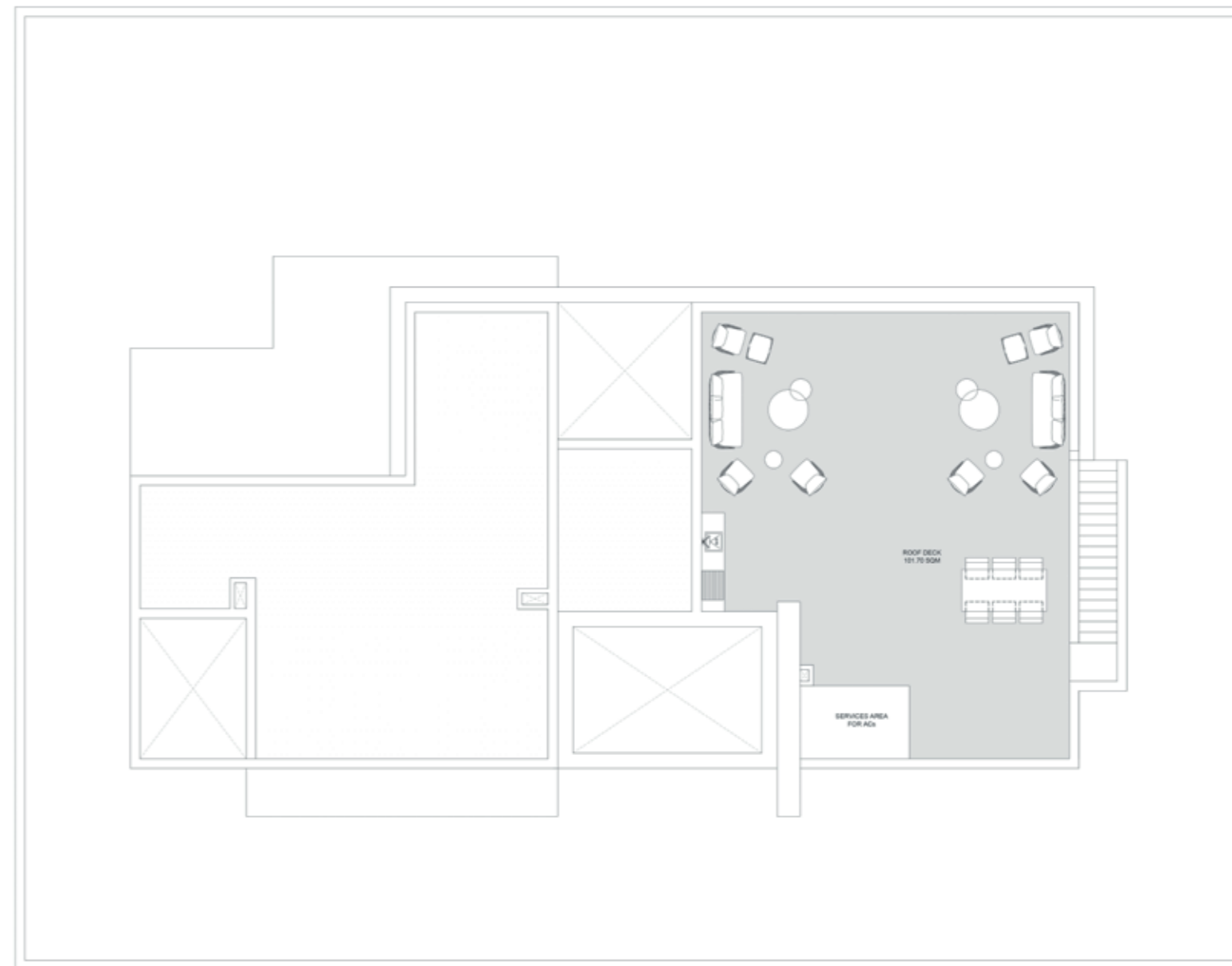


Components:

- 4 Bedroom
- Nanny's room
- Driver's room

Ground Floor	278.5 SQM
Roof Terrace	96.3 SQM
<b>Total Area</b>	<b>374.8 SQM</b>

Roof Floor



# SHORELINE VILLA ART DECO



- Full Sea View From The Ground Floor
- Elevated Seafront
- Art Deco Architectural Design
- En Suite Bedrooms
- Master Bedroom Has A Full Seaview
- Wide Roof Terrace



# SHORELINE VILLA ART DECO

Components:

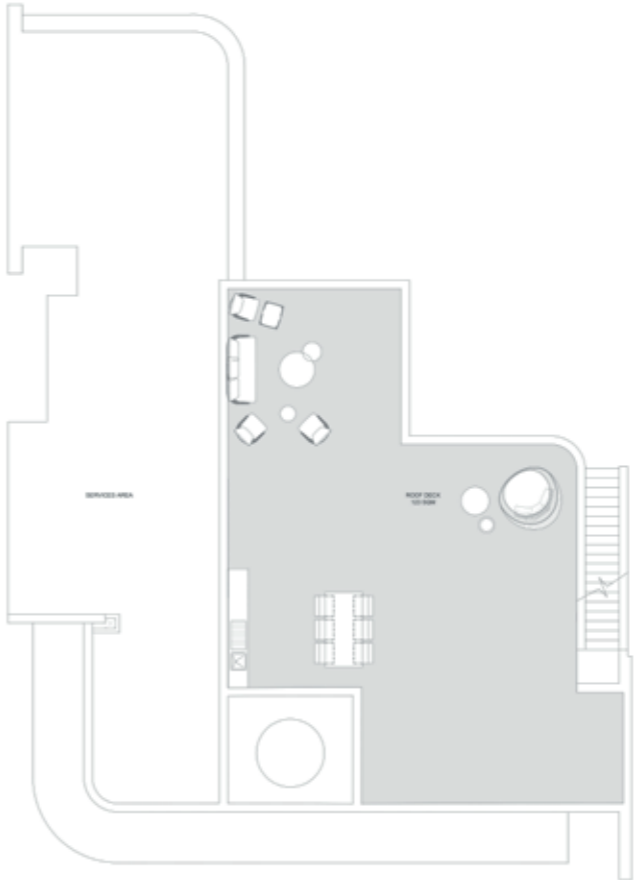
- 4 Bedroom
- Nanny's room
- Driver's room

Ground Floor	271.6 SQM
Roof Terrace	123 SQM
Total Area	394.6 SQM

Ground Floor



Roof Floor



# SHORELINE VILLA



- Full Sea View From The Ground Floor
- Elevated Seafront
- En Suite Bedrooms
- Master Bedroom Has A Full Seaview
- Wide Roof Terrace



# SHORELINE VILLA

## Components:

- 4 Bedroom
- Nanny's room
- Driver's room

Ground Floor	295.9 SQM
Roof Terrace	119.7 SQM
Total Area	415.6 SQM

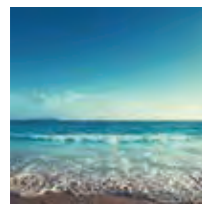
Ground Floor



Roof Floor



# Voi ART DECO



- Various Magnificent Sea Views Varying From Full Sea View/ Sea View From The First Floor, Lagoon View, Horizon Sea View
- Art Deco Architectural Design



# V01 ART DECO

## Components:

- 5 Bedroom
- Nanny's room
- Driver's room

Ground Floor	167.3 SQM
First Floor	151.12 SQM
Terraces	23.3 SQM
Total Area	341.72 SQM

Ground Floor



First Floor



V01



- Various Magnificent Sea Views Varying From Full Sea View/ Sea View From The First Floor, Lagoon View, Horizon Sea View



# Vo1

Components:

- 5 Bedroom
- Nanny's room
- Driver's room

Ground Floor	177.3 SQM
First Floor	156.6 SQM
Terraces	34 SQM
Total Area	367.9 SQM

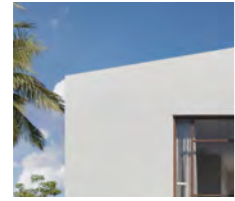
Ground Floor



First Floor



Vo2



- Sea View From The First Floor
- Diversified Views (Lagoon Views & Partial Sea Views)
- Wide First Floor Terrace



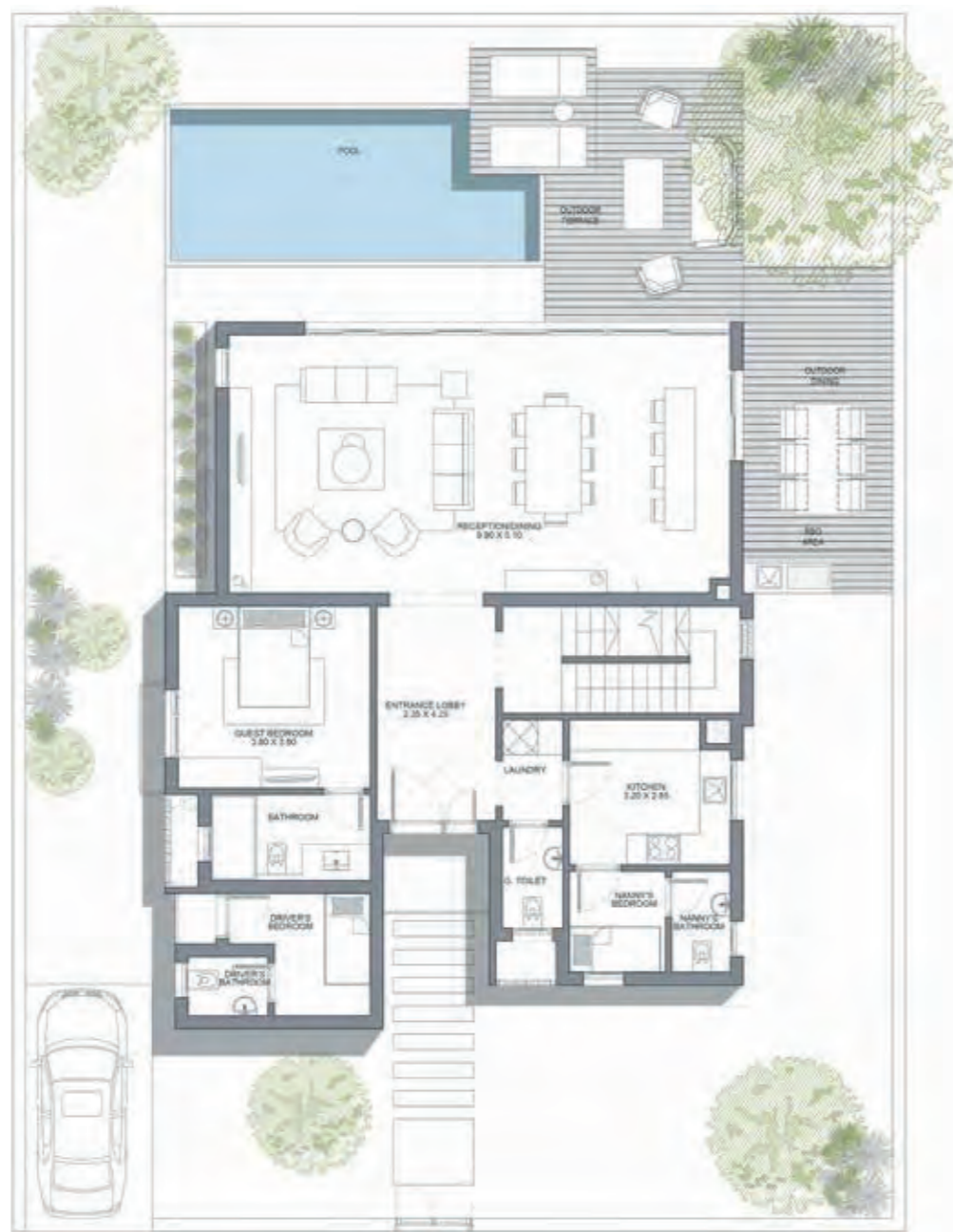
VO2

Components:

- 4 Bedroom
- Nanny's room
- Driver's room

Ground Floor	146.87 SQM
First Floor	107.3 SQM
Terraces	37.2 SQM
Total Area	291.37 SQM

Ground Floor



First Floor





For more information on joining June community please contact us at: 16220

**SODIC SALES CENTRES**

Sheikh Zayed: Km. 38 Cairo-Alexandria Desert Road Heliopolis: 46 El-Thawra Street  
New Cairo: St.90 address-Plot 67, St.90, New Cairo

**DISCLAIMER:**

- Diagrams are not to scale and are for illustrative purposes.
- SODIC reserves the right to make minor alterations.
- All rendering and other visual materials, designs, facades are for illustrative purposes only and are subject to change.
- SODIC reserves the right to use different finishing elements and sanitary fixtures models from those which are shown in renders and specification sheets.
- Final models used in our finishing are similar and subject to market and availability at the time of operations.
- This brochure contains material, which is owned by or licensed to SODIC. This material includes, but not limited to, the design, layout, look, appearance and graphics.  
Reproduction is prohibited.

A COASTAL TOWN BY

